

# OPTICAL FRAME ASSESSMENT SYSTEM

# OM8000

Track movement of frame as corrections are being made



IR Camera has self-contained light source for accuracy



Retro-reflective targets are easy to mount & reference the centerline

Self-centering frame gauges accurately represent the vehicle condition

## OM8000 Optical Frame Assessment System

Bee Line's OM8000 optical frame correction system makes use of a single camera to capture the initial conditions of a damaged frame allowing the operator to determine what corrective measures need to be taken.

The system is capable of accurate initial condition reporting, dynamic tracking of adjustments as they are made and final condition reporting relative to appropriate specification allowances.



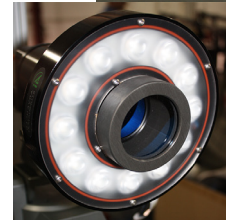
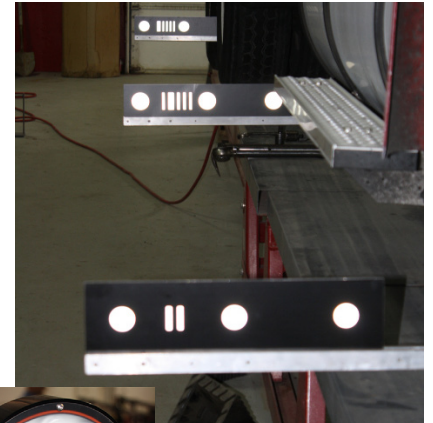
# OM8000

## OPTICAL FRAME ASSESSMENT SYSTEM



### THE PROCESS

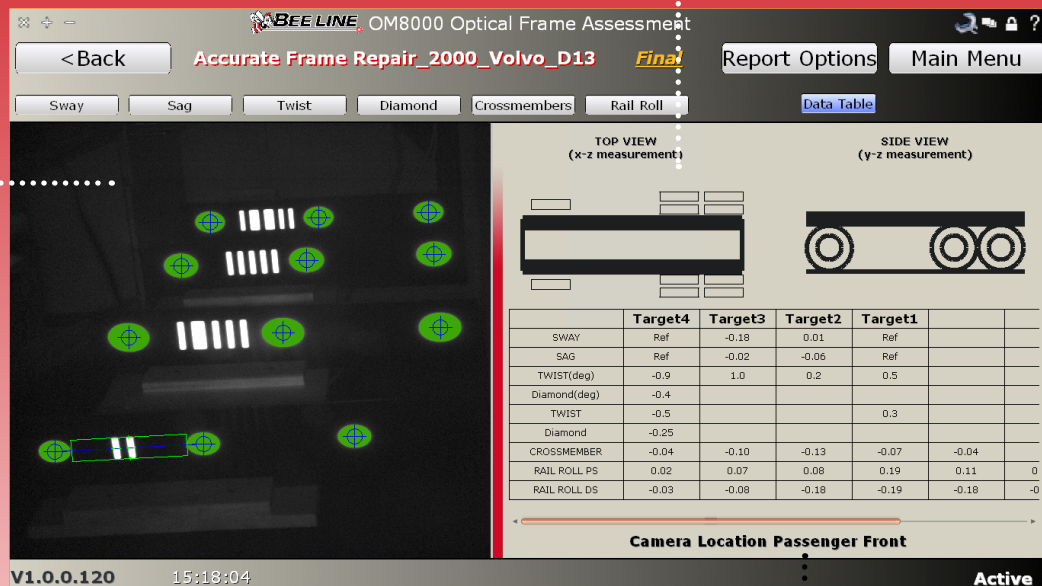
- 1 Enter specific vehicle data and capture "before" pictures of the damaged areas to upload to diagnosis software.
- 2 Properly mount the frame gauges on the truck rails. New lock design secures the gauges to the frame, ensuring that they sit 90° to the frame. Focus the camera and capture coordinates of all points on all targets.
- 3 The system diagnoses and illustrates the condition(s). Results are documented and a report is generated showing before and after photos and frame assessment data.



### EXCLUSIVE SOFTWARE FEATURES

IR Camera provides clear visibility of damage condition.

Dynamic graphic clearly illustrates the location of the condition.



View live data as corrections are being made.

