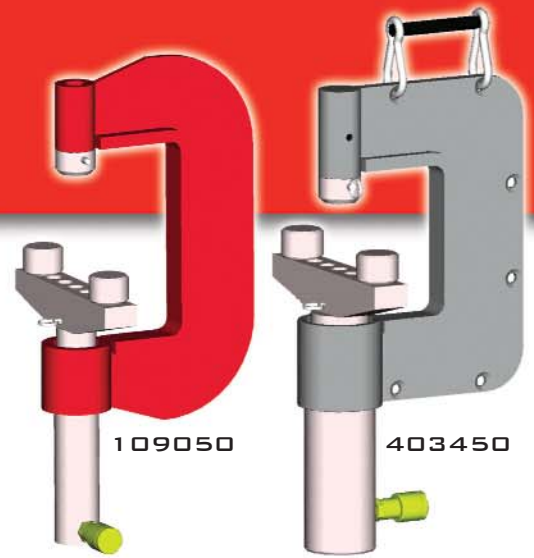




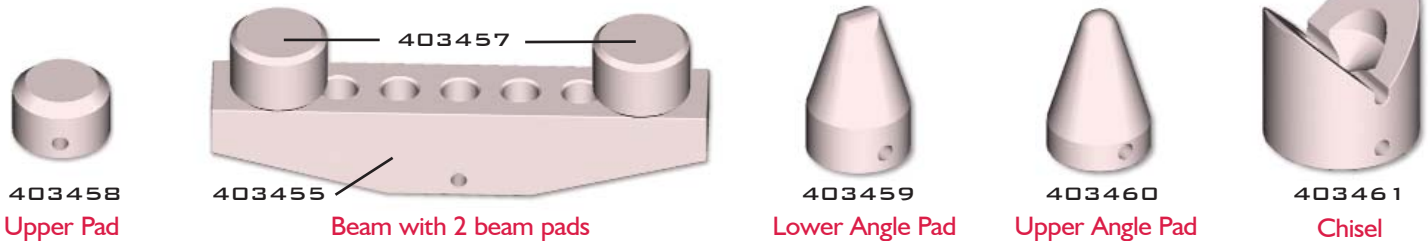
10 AND 20 TON C CLAMPS

Valuable truck and trailer frame repair tools

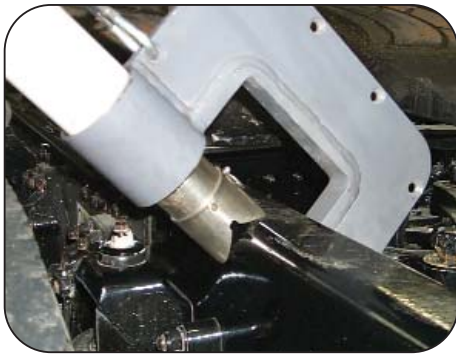
When making repairs on damaged truck and trailer frames, the strength of the frame is not 100% until it is returned to its original form. That means that every buckle and kink on the frame's flanges and web must be restored before the vehicle is completely safe to return to the road. Bee Line's powerful C clamps are designed to make this restoration as safe and efficient as possible. With these C clamps you can quickly restore frames on the lightest trailers to the most heavy duty trucks. Don't compromise the quality of your work by restoring your frames to less than 100%. Use the simple proven method that Bee Line C clamps offer your shop.



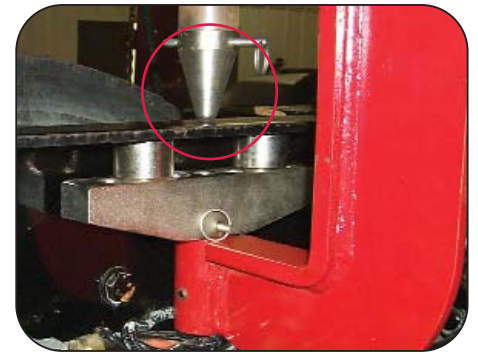
THE 109050 10 TON LIGHT DUTY AND THE 403450 20 TON HEAVY DUTY C CLAMPS ARE SOLD SEPARATELY. THE 403450 FEATURES A REMOVABLE HANDLE THAT CAN BE REATTACHED IN 3 SPOTS.



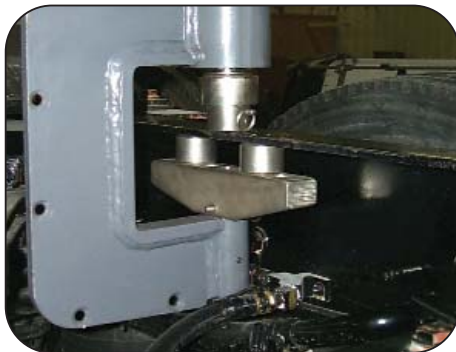
THE C-CLAMPS COME STANDARD WITH THESE TOOLING HEADS TO GIVE YOU ACCESS TO THE TIGHTEST AREAS OF THE FRAME. EACH PIECE IS HELD IN PLACE BY A SINGLE PIN AND CAN QUICKLY BE INTERCHANGED IN A MATTER OF SECONDS.



WITH THE CHISEL (LEFT) AND THE LOWER ANGLE PAD (RIGHT), CORRECTIONS CAN EASILY BE MADE TO THE RADIUS EDGE BETWEEN THE WEB AND FLANGE.



THE UPPER ANGLE PAD CAN BE POINTED AT A SPECIFIC AREA FOR EXTREME PRECISION.



THE BEAM FEATURES PADS THAT CAN BE POSITIONED IN SEVERAL SLOTS FOR A VARIETY OF BENDS.

SPECIFICATIONS

10 TON CLAMP Throat depth: 6" Clamp opening: 11" Clamp Weight (C only): 24 lbs.

20 TON CLAMP Throat depth: 5.25" Clamp opening: 7" Clamp Weight (C only): 28 lbs.

TOOLING HEAD WEIGHTS 403458: .8 lbs. 403457: 1.25 lbs. 403455: 8 lbs.
403459: 1.5 lbs. 403460: 1 lbs. 403461: 3.5 lbs.

HYDRAULIC RAMS ARE SOLD SEPERATELY

BEE LINE 2700 62ND ST. CT., P.O. BOX 130 BETTENDORF, IA 52722
800-728-7828 FAX 563-332-6517 BEELINE-CO.COM